

ReQuest Audio
SWITZERLAND AG

The Beast

Editing Metadata



Grooming your music collection will provide the best experience possible. Not only will you see the album artwork as the artist intended, but you will also have access to many more pieces of information about the music tracks themselves. A well groomed collection will allow you to find and play the music you want much more easily. Our software will make the best possible match for artwork and track information possible, but there is no replacement for the human eye and mind when deciding how the information should be presented and what information is displayed.

Note: It is assumed that you are now familiar with how to obtain the IP address of your server so you can access the web tools from your computer or mobile device. If you do not know how to get this information, please refer to the Getting Started guide.

Note: If your system is configured as a client of another master server in a multi-home NetSync arrangement, you will not be able to edit any data on the client system.

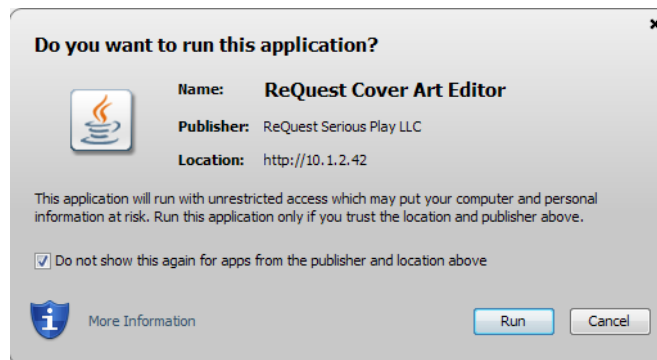
The artwork displayed for each track is called “album art” or “cover art.” This may be changed at any time for the albums imported into the system. Editing the cover art involves locating a new image file on your computer, or the Internet, and applying it to the album.

You can obtain image files from just about anywhere on the Internet. There is no, single master catalog or library of images, but using an image search tool, such as Google Images, will give you many options. Sometimes, the album artwork you are looking for simply doesn’t exist on the Internet. You may find that you need to scan or photograph the original artwork from your CD or LP vinyl cover.



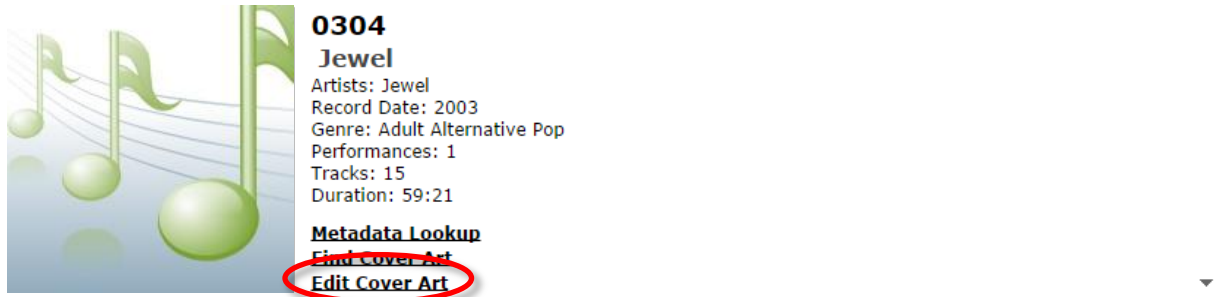
The Cover Art Editor is a Java® applet written by ReQuest Serious Play LLC. It requires Oracle Java to run. Java must be enabled on your web browser and your computer’s local security settings must allow you to work with Java applets. Unfortunately, hackers expose flaws in the Java subsystems and the web browser company will disable Java until you update to the latest from Oracle. Before running the Cover Art Editor, please visit <https://www.java.com/verify> to ensure that your computer is ready for a Java-based tool.

The ReQuest Cover Art Editor has been signed and certified secure as shown in the Java Security alert. You are safe to accept this message. We recommend checking the “Do not show this again...” checkbox so you are not bothered by this message each time you try to edit the cover art.



The Beast

To begin, navigate to the Album detail page of the album you wish to alter the artwork for and click on the “Edit Cover Art” link.




0304
Jewel
Artists: Jewel
Record Date: 2003
Genre: Adult Alternative Pop
Performances: 1
Tracks: 15
Duration: 59:21

[Metadata Lookup](#)
[Find Cover Art](#)
[Edit Cover Art](#)

Make each track a separate performance

Track	Time	Performance	Track
1	3:14	0304	Stand
2	3:39	0304	Run 2 U
3	3:49	0304	Intuition
4	3:23	0304	Leave The Lights On
5	3:16	0304	2 Find U
6	3:33	0304	Fragile Heart
7	3:14	0304	Doin' Fine
8	4:40	0304	2 Become 1
9	4:53	0304	Haunted
10	4:09	0304	Sweet Temptation
11	4:01	0304	Yes U Can
12	3:37	0304	U & Me = Love
13	3:43	0304	America
14	4:22	0304	Becoming
15	5:41	0304	Intuition (Ford's Radio Mix)

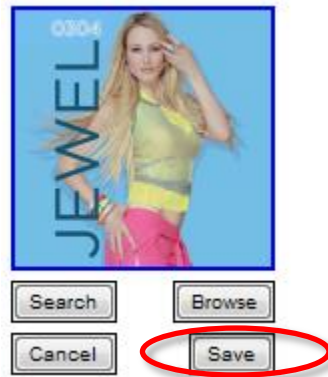
Once the Cover Art Editor loads, you will see buttons and a black frame around the image. You are now editing the image.



- Search** Opens a new web browser window or tab with a Google Image Search with some possible matches.
- Browse** Opens your computer’s File Selection window to locate an image you already saved to your computer.
- Cancel** Close the Cover Art Editor without making any changes.
- Save** Commit the changed cover art to all of the tracks in this album.

You can also drag-and-drop the file from another web browser window¹ or from your computer’s Explorer (Windows) or Finder (Mac) window.

Once the image has appeared in the Cover Art Editor, click “Save” to commit the new artwork to the tracks.



The save process may take some time to complete depending on the number of tracks that will receive this new artwork. When the system is ready, the Cover Art Editor will close and you will see your new artwork applied to the album.

The information about the album, artist, and song is called metadata – meaning data that describes other data. Since the important “data” about a music file is the music data, the extra data about the music is meta, or on top of, the music. A song’s metadata is how we describe the categories the song belongs in. Whether it is the album title, song title, artist, genre, or the cover art, all of it is metadata that you can edit.

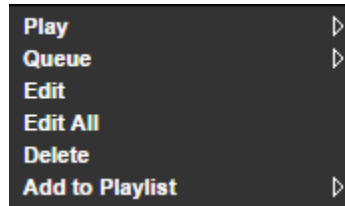
Some metadata cannot be edited. We call this “read only” metadata since you cannot change this information. For music files, read only metadata includes bitrate, sample rate, bit depth, and creation date. These kinds of information will not be altered by grooming the collection. To change these, you must import new music files with the desired qualities.

The following table shows all of the metadata that can be edited about the music in the system. Note that not all edit entry points will show all of these fields.

Field	Description	Artist Albums	Album	Song
Album	Title of the album	✓	✓	✓
Artist	Performer or band name	✓	✓	✓
Composer ¹	Song writer(s)	✓	✓	✓
Conductor ¹	Person who conducted the orchestra for this performance	✓	✓	✓
Orchestra ¹	Name of the orchestra performing this performance	✓	✓	✓
Record Date	Date the performance was recorded	✓	✓	✓
Release Date	Date the performance was released on album	✓	✓	✓
Catalog Number	Reference number sometimes included on CDs	✓	✓	✓
Track	Track number of this song on the album		✓	✓
Disk	For a multi-disk set, indicates which disk this is	✓	✓	✓
Genre	Type of music this is categorized as (e.g. Classical, Rock)	✓	✓	✓
Track Title	Title of the track		✓	✓
Performance ¹	Specific showing or recording of the music by a specific orchestra		✓	✓
Composition Date ¹	Date the piece was written by its author			✓
Performance Date ¹	Date the piece was performed			✓
Encoded By	Optional data to indicate the source (e.g. Apple, HDTracks)			✓
Additional Artists	Listing of additional contributors to the performance			✓
Review	Open text about this piece			✓
UPC	Barcode found on the CD or album case for reference			✓
Comments	Your comments about this track			✓


Media Location	Instruct the system on where this track should be located amongst the storage devices.			✓
Custom Fields	User defined custom metadata fields			✓
¹ Only available when Classical mode is active.				

Anywhere on the web tool that you see a ▼ icon, you can left-click to expand a menu for more options. The options will almost always include Edit, Edit All, and Delete.




- Edit** Opens the editable fields for the item you clicked edit for
- Edit All** Opens ALL available, editable fields
- Delete** Deletes the item you selected – if item is a container such as Album or Genre, all items in the container are also deleted.

Invoking Edit from the Artist Album list will show the following. Note that this system is running in Classical mode which adds Composer, Conductor, and Orchestra.

	Album	<input type="text" value="0304"/>
	Artist	<input type="text" value="Jewel"/>
	Composer	<input type="text"/>
	Conductor	<input type="text"/>
	Orchestra	<input type="text"/>
	Record Date	<input type="text" value="2003"/>
	Release Date	<input type="text"/>
	Catalog Number	<input type="text"/>
	Disk	<input type="text" value="4"/> Save
	Genre	<input type="text" value="Adult Alternative Pop"/> Cancel

When you have made your edits, click [Save](#) to commit the changes. Since we are editing an album, all of the tracks in this album will also be edited with this new information.

Invoking Edit on a track from the Album details will edit the track's title.



0304
Jewel
Artists: Jewel
Record Date: 2003
Genre: Adult Alternative Pop
Performances: 1
Tracks: 15
Duration: 59:21

[Metadata Lookup](#)
[Find Cover Art](#)
[Edit Cover Art](#)
[Make each track a separate performance](#)


Track	Time	Performance	Track
1	3:14	0304	Stand
2	3:39	0304	Run 2 U
3	3:49	0304	Intuition

When you have finished editing in this type of field, press “Enter” on your keyboard. To abandon or cancel your change, press F5 to refresh the page.

Tip: The track number can also be edited here even though there is no ▼ icon by clicking on the number or space and selecting Edit from the menu. Press Enter to commit the change.

Track	Time
<input type="text" value="1"/>	3:14

From the Track Details page, you can edit one or more fields at the same time. Here we have selected Edit All for this track.



File Name cd04_01_stand.wav
File Type WAV
File Size 32 MB
Added On January 30th, 2014
Length 3:14
Sampling Frequency 44.1 kHz
Bits Per Channel 16
Channels 2
Bit Rate 1411 kbps
Last Played On August 21st, 2014
Number of Times Played 2

Apply changes to: [Previous Track](#) | [Next Track](#)
[Save](#) | [Cancel](#)

Track Title	<input type="text" value="Stand"/>
Artist	<input type="text" value="Jewel"/>
Composer	<input type="text"/>
Conductor	<input type="text"/>
Orchestra	<input type="text"/>
Album	<input type="text" value="0304"/>
Performance	<input type="text" value="0304"/>
Track	<input type="text" value="1"/>
Disk	<input type="text" value="4"/>
Composition Date	<input type="text"/>
Performance Date	<input type="text"/>
Record Date	<input type="text" value="2003"/>
Release Date	<input type="text"/>

When you are done making edits, click the [Save](#) link in the upper right or click [Cancel](#) to abandon your changes.

Tip: You can apply changes to the entire album here as well by selecting “This Entire Album” from the “Apply changes to” drop-down. The system will automatically undo edits for track-specific fields like Track Title.

Other Cases

Since the system lets you edit virtually any piece of information about a track or tracks, you can leverage this power to make massive edits for larger containers of tracks.

For example, if you wish to change every song currently in the Rock genre to Classic Rock, you can edit the Genre itself. Every track currently in Rock will now be Classic Rock. Note that the next track added to the system that arrives as Rock will begin the Rock genre anew.

That same technique can be applied to Albums or Artists as well. This is useful to correct spelling errors or to make all of the variations of a piece of data the same. For example, you import your library of Björk CDs only to find that some of the metadata came up as Bjork. You can edit the Artist name Bjork to Björk so all of the albums are properly displayed.